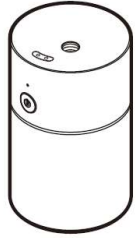


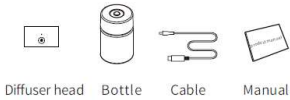
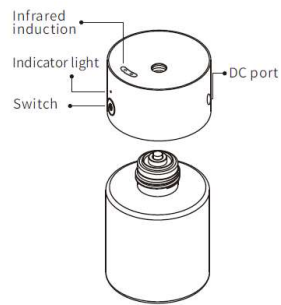
## PRODUCT MANUAL



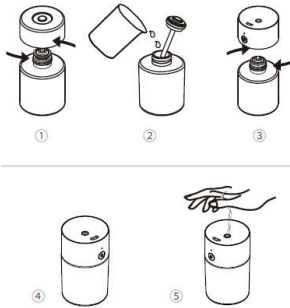
### Model:A803-D

Dimension: φ56x90mm Voltage: DC5V  
 Bottle: 80ml Power: 2.5W  
 Charging Time: 3h N.W:195g

### Introduction:

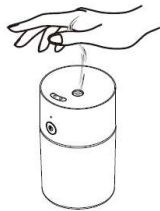


### Directions:



- 1.Unscrew the bottle
- 2.Fill in the alcohol sanitizer, install the cotton core through the inner plug
- 3.Install the diffuser head
- 4.Press switch button about 2s to turn on machine
- 5.Get you hand cover induction area to get mist

### Function indication:



- 1.You need to cover the infrared indicator area to start the mist; indicating distance 9-11 cm; every continuous mist lasts for 10 seconds.
- 2.For fast moisture, keep your hand within 5cm high from the induction area to avoid more alcohol volatilizing.
- 3.One full charging can support around 300 times use, and one-time-use based on 10 seconds mist.
- 4.Full charge power can support 24 hours standby status

### Indicators:

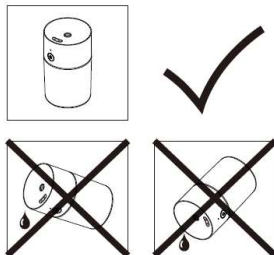
Indicator	Power on	Power off
Battery recharging	light is on	flashing every 2s
Finish recharging	—	light is off

### Precautions:



1. After installation, please keep machine vertical.Tilting or placing it flat may cause an oil overflow.The machine efficiency may be affected if the circuit board is contaminated.
- 2.Shall not modify, disassemble or repair the machine arbitrarily. Any failure happens,please contact relevant technician in time.
- 3.Alcohol sanitizer only, 40%-75% Alcohol suggested, follow your country regulations for alcohol sanitizer standards.
- 4.Avoid using the machine when the sanitizer is empty.

**Caution:** Sanitizer other than Alcohol may cause harm to both the machine or human body.



## PRODUCT MANUAL

### A803-D

