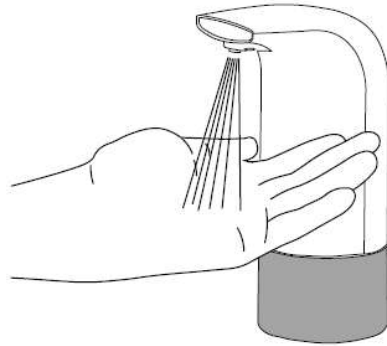
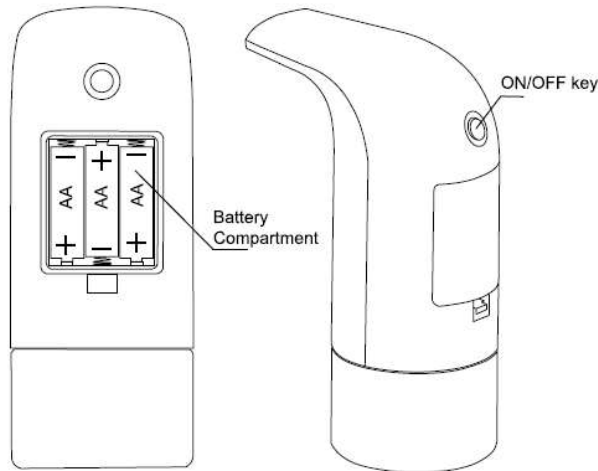
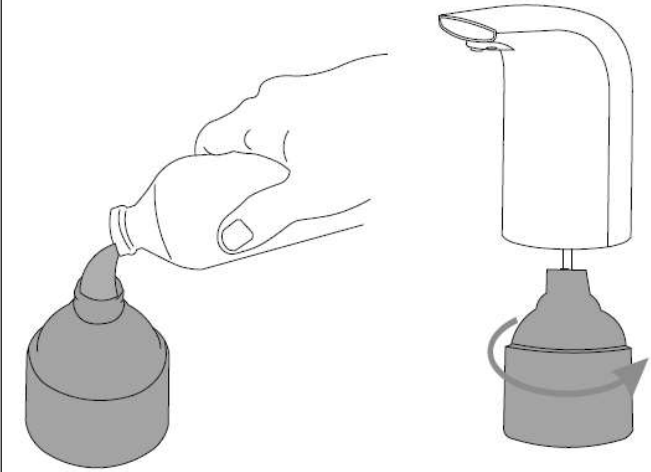
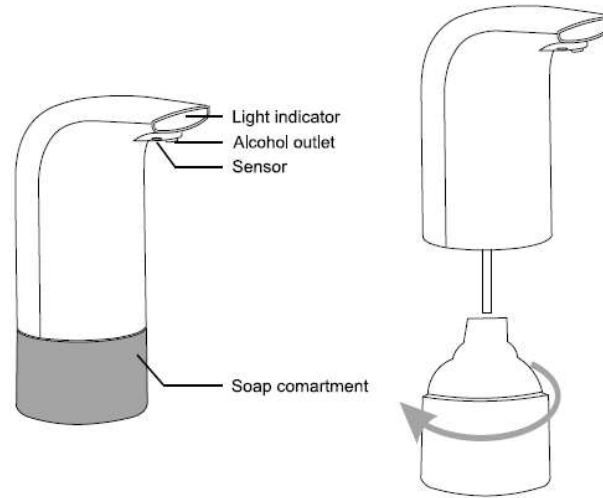


## Inductive Alcohol sprayer



DIRECTION FOR USE



The machine is designed for alcohol and disinfectant

### Note

- Inpouring alcohol and disinfectant (Non-gel).
- Please pay attention to avoid the other materials entering the bottle while inpouring the alcohol
- In case of short circuit, it is not allowed to immerse the machine or wash it by water directly. To clean, use a towel to wipe the surface of the machine
- No need to shut down, the machine will automatically enter standby mode under normal conditions
- When the indicator light turns red, it means that the battery power is low and to be replace
- Do not put the machine down when alcohol still in the machine
- Do not place the machine under any mechanical pressure.

- Please handle with care! The machine may be damaged by shock or drop .
- Please avoid direct sunlight.
- Do not use if the machine falls into the water.
- Do not use if have any visible signs of damage.
- Do not use the machine in shower.
- Do not pour corrosive chemicals into the bottle.
- Put the battery in the battery compartment, pay attention to the positive and negative direction, and ensure that the battery cover is closed.
- Using 1.5V AA alkaline battery, 1.5V AA rechargeable battery can also be used for this equipment.
- It is recommended to use a battery of 3 identical brands.
- To prevent leakage of the battery, if the equipment is not used for a long time, please remove the battery.