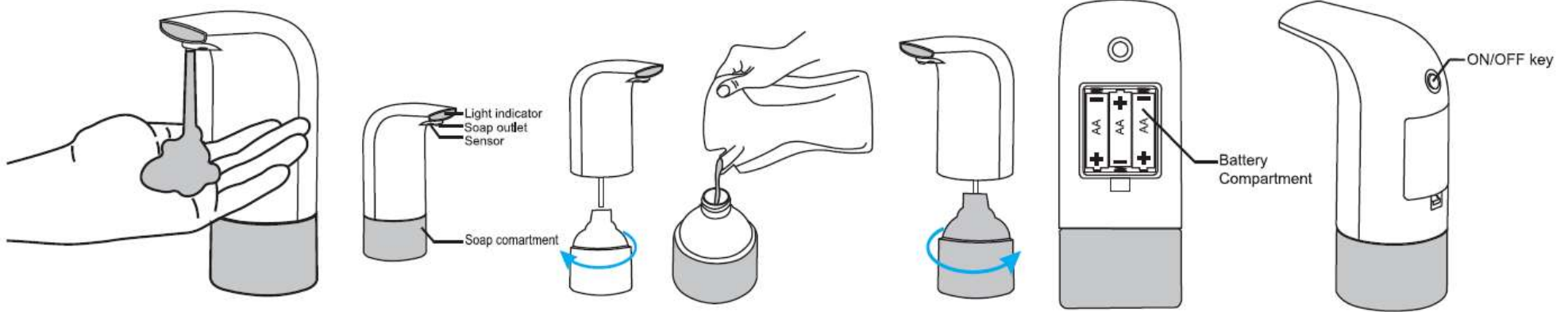


AUTOMATIC FOAM SOAP DISPENSER



DIRECTION FOR USE

This product is specially designed for foaming hand sanitizer.
Cautions

- Add correct foaming hand sanitizer.
- When adding hand sanitizer, avoid impurity entering the bottle, prevent debris from causing machine blockage
- Please avoid immersing the machine in water or rinsing directly with water to avoid short circuit. For cleaning, wipe the machine surface with a wet towel.
- Normally, there is no need to turn off the machine, and the machine automatically enters the standby mode.
- When the battery power is low, the indicator lights will be red, and it is necessary to replace the battery.
- Do not down the machine when you have hand sanitizer in the machine.
- Do not put the machine under any mechanical pressure.
- Please handle with care. Vibration or falling may damage the machine.
- Please avoid direct sunlight.
- If the hand sanitizer machine falls into the water, do not use it.
- Do not use if have any visible signs of damage.
- Do not use the machine in shower.
- Do not pour flammable liquids or corrosive chemicals into the bottle.
- Put the battery in the battery compartment, pay attention to the positive and negative direction, and ensure that the battery cover is closed.
- Using 1.5V AA alkaline battery, 1.5V AA rechargeable battery can also be used for this equipment.
- It is recommended to use a battery of 3 identical brands.
- To prevent damage of the battery, if the equipment is not used for a long time, please remove the battery.

This machine is specially designed for foaming hand sanitizer.

Recommend to use the foaming hand sanitizer, easy to use, foaming effect is good. If it is an ordinary non foaming hand sanitizer, you need to mix it with water to make it foam. Stir well with a stick after mixing water. Do not shake.

This product supports both ordinary hand sanitizer and detergent.

How to judge whether liquid is applicable?

Please add proper amount of water to the liquid and rub it in your hands. If it can foam and has no other impurities, it can be used. If there are granular liquids or other dopants in the liquids, it is strictly forbidden to add them into the liquids, which will cause damage to the machine.

Usage Method

First, pour the bubbling liquid into the bottle, according to the consistency of the liquid, 2-3 times of water is added to mix evenly. No shaking! First add more water, and if the foam is too thin, add a little liquid.

